

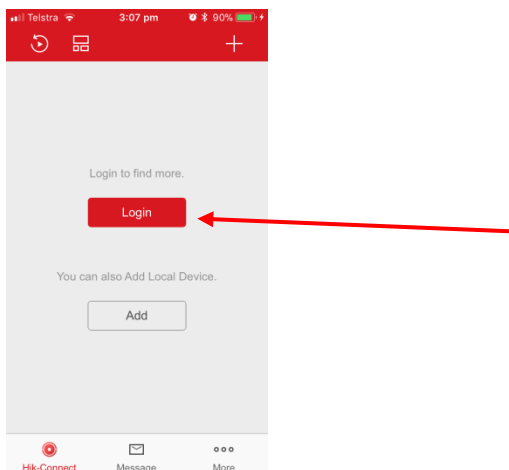
Connecting Hik-connect with your NVR

The NVR needs to be connected to your modem router for connection to the Hik-connect APP.

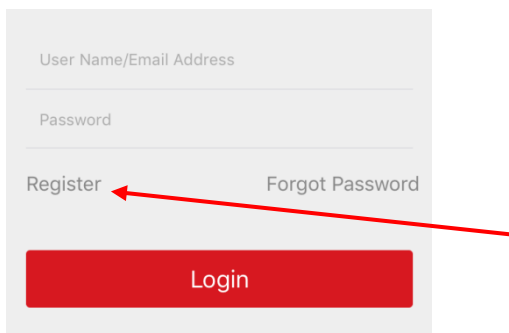
1. Download the **Hik-connect** APP.



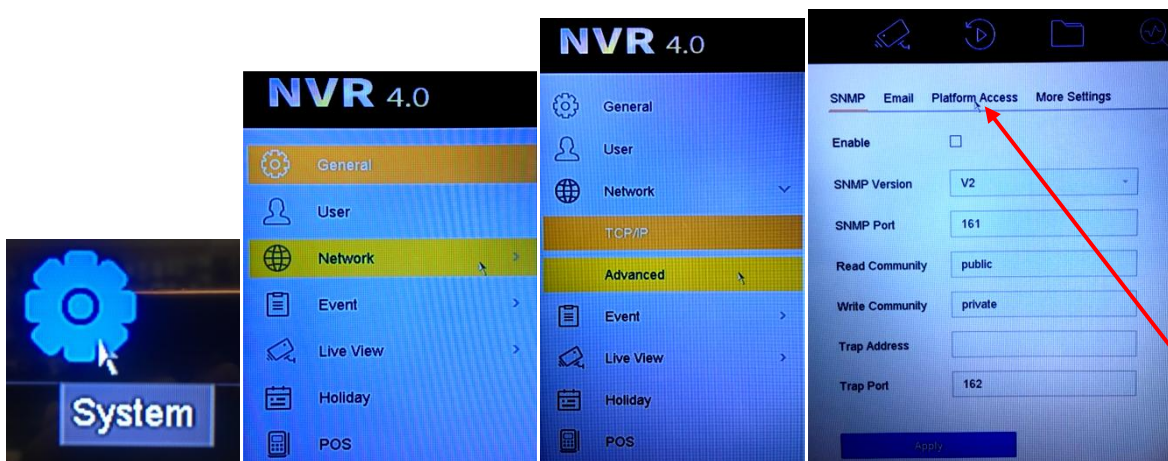
2. Open the app and click **login**.



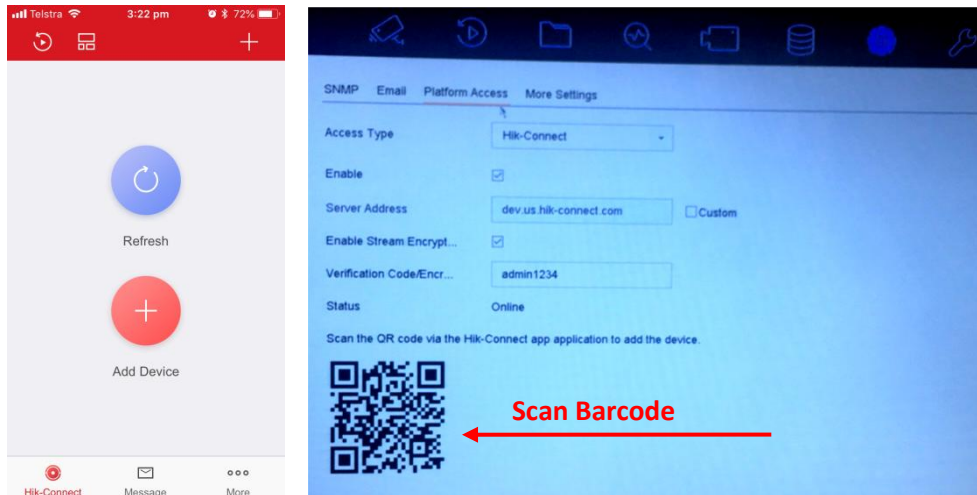
3. You must **register** first to create a username and password. Once you have registered, log in on the app.



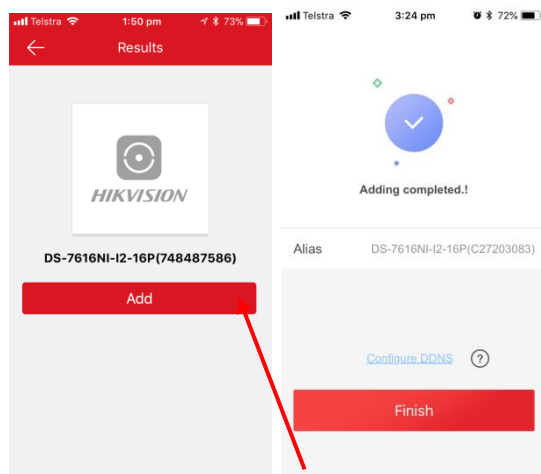
4. Go to the NVR, right click and select **System > Network > Advanced > Platform Access**



5. Open Hik-connect APP. To add a device tap **+ Add Device**. Scan **QR Code**. Scan the code showing on your NVR screen.



6. Tap **Add**. Tap **Finish**.



7. Tap on your added device to view your cameras, and double tap to enlarge.

